

## Service Performed For:

---

Site location

Date Opened: 8/25/2004

Inspection Date: 7/13/2021

Inspector Name:

Projected Completion Date: 10/13/2021

SC Work Order: NA

## Driver for Corrective Action

 Attention Needed

 Action Needed

  Action Required



*Function/Safety; repair erosion on basin embankments to ensure safety of maintenance crews; repair damaged fountain breaker*

## Summary of Issues

---

The following issues were noted during a recent maintenance visit to the stormwater facility.

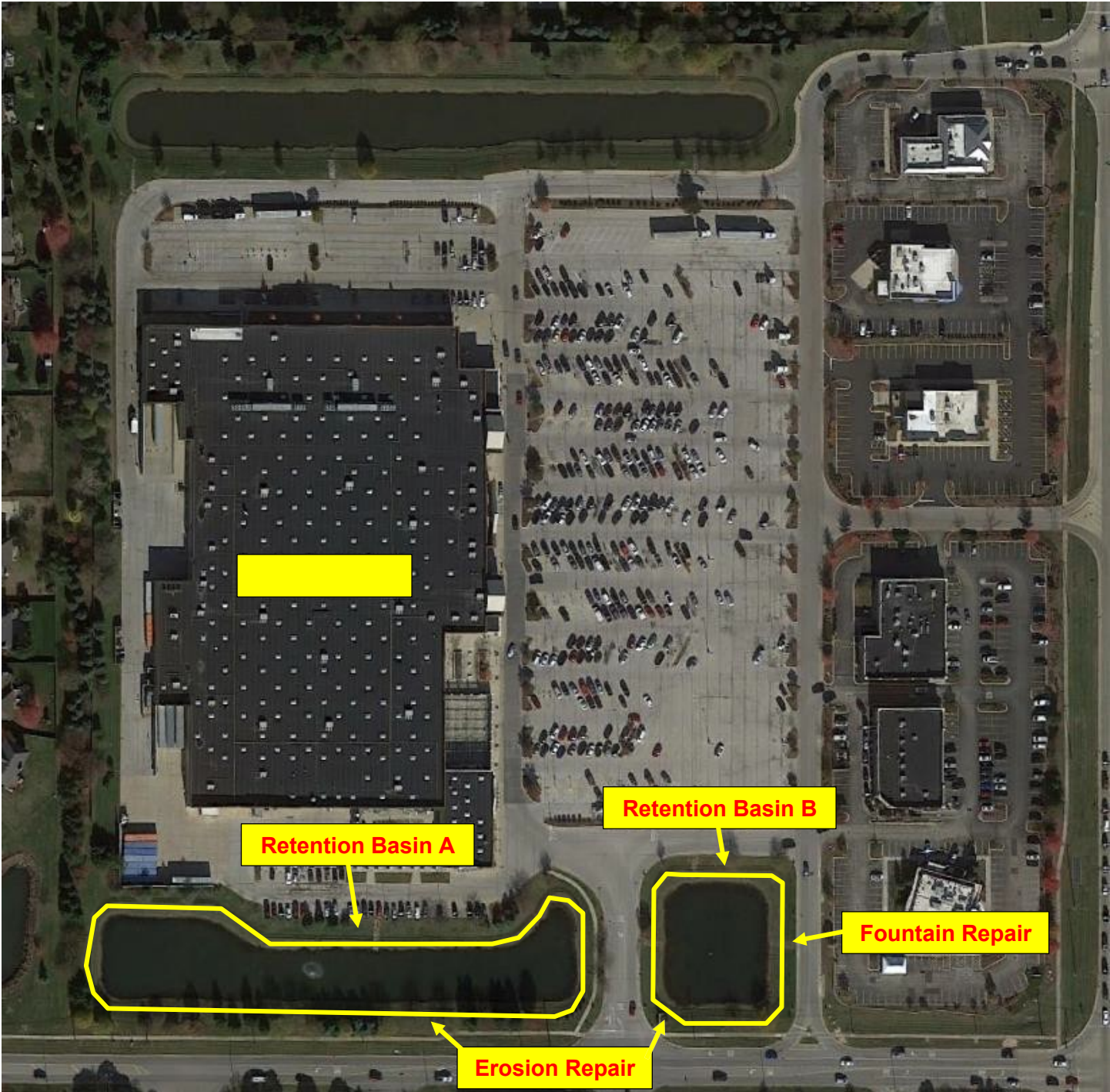
There are two retention basins on the south side of the facility that are experiencing moderate to severe erosion on their embankments.

The fountain panel in Retention Basin B is inoperable and needs to be replaced.

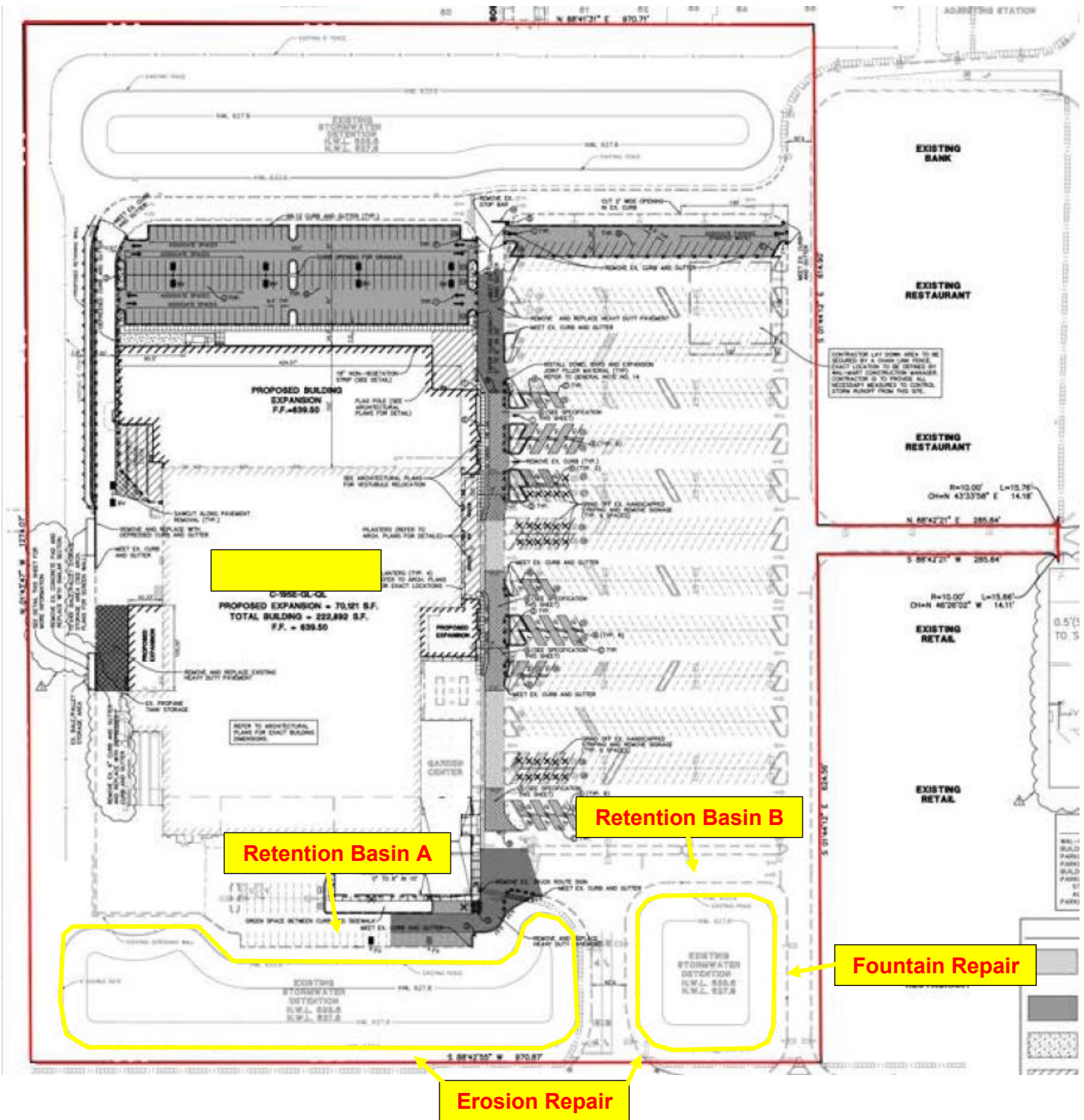
## Root Cause

---

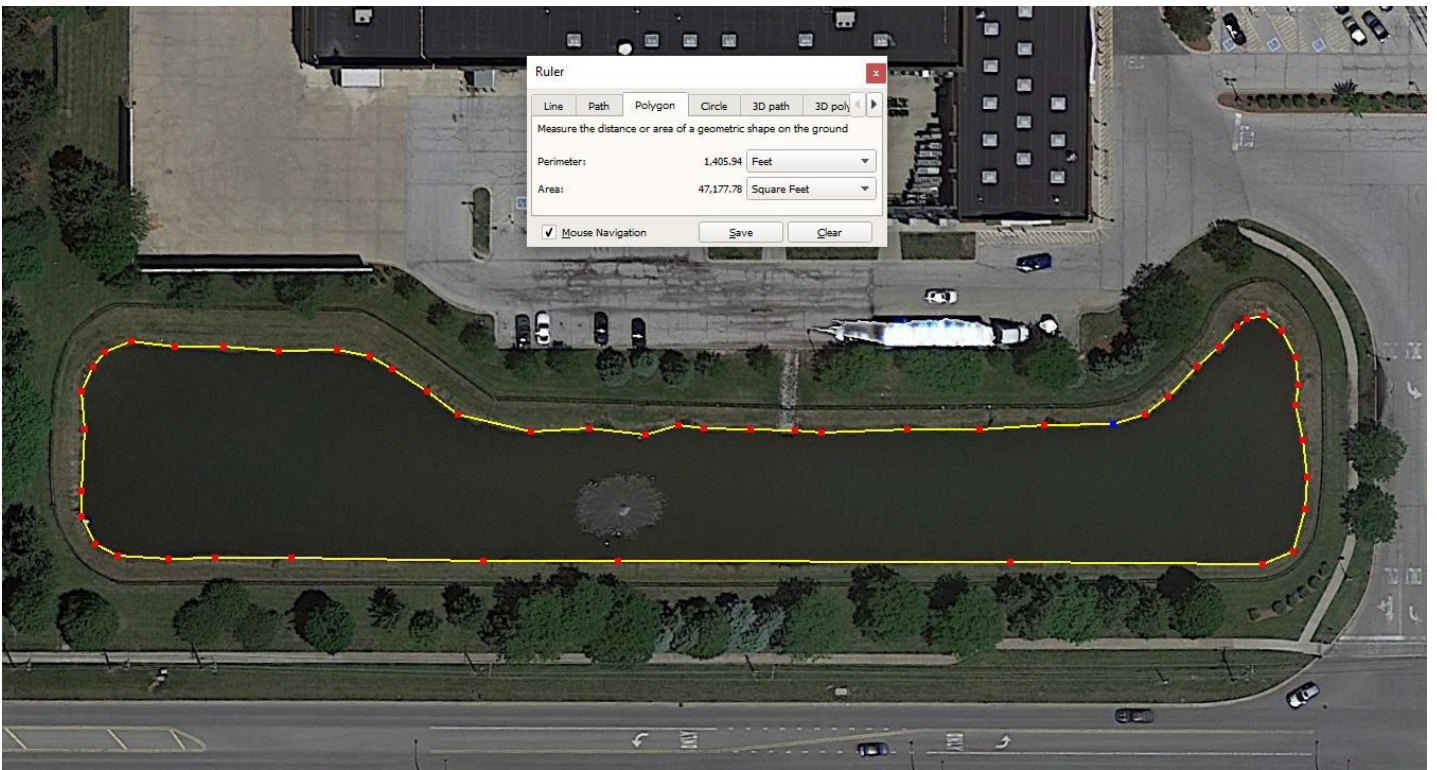
Pests; wave action caused by fountains



# Property Boundary- Red Line

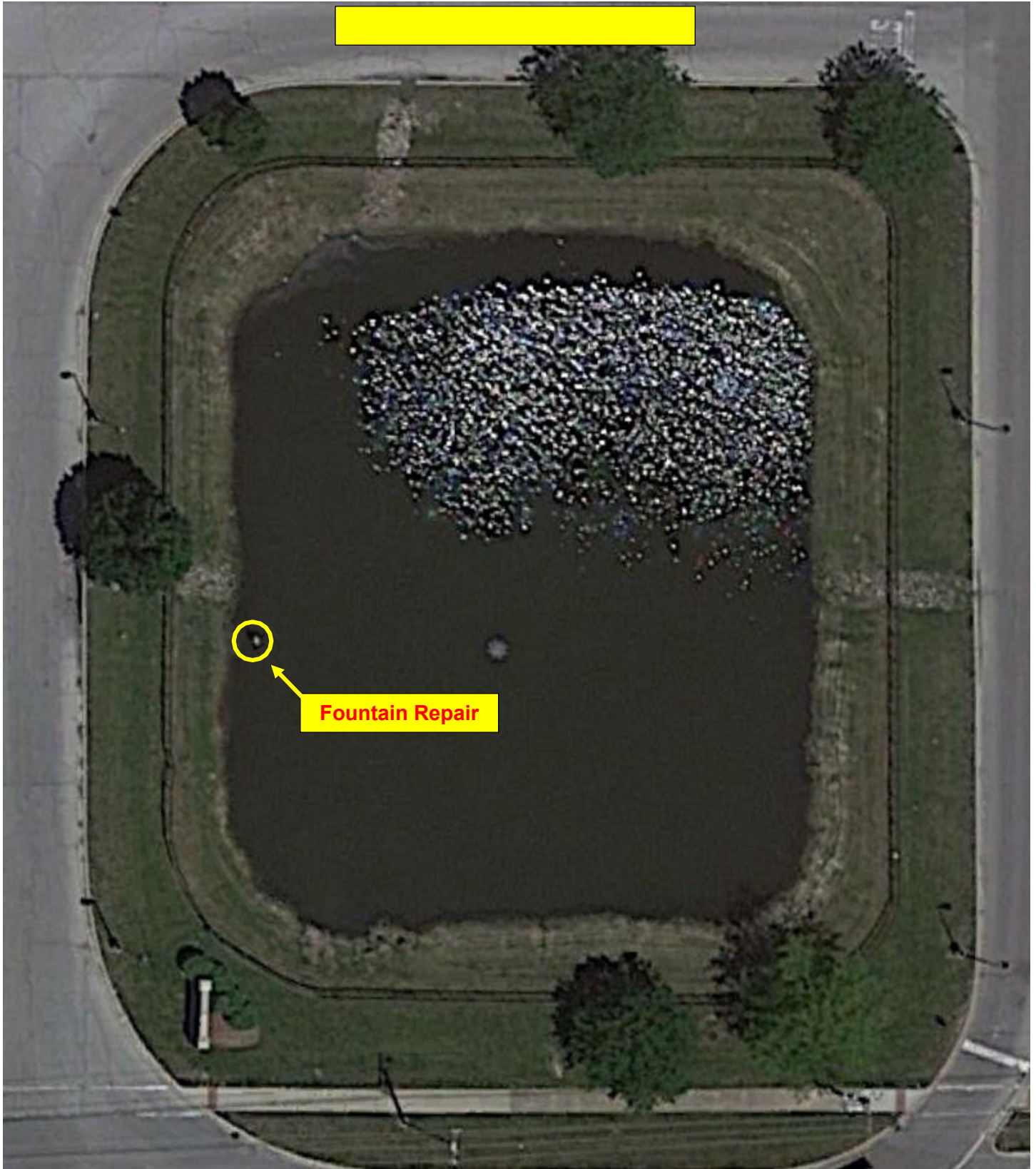


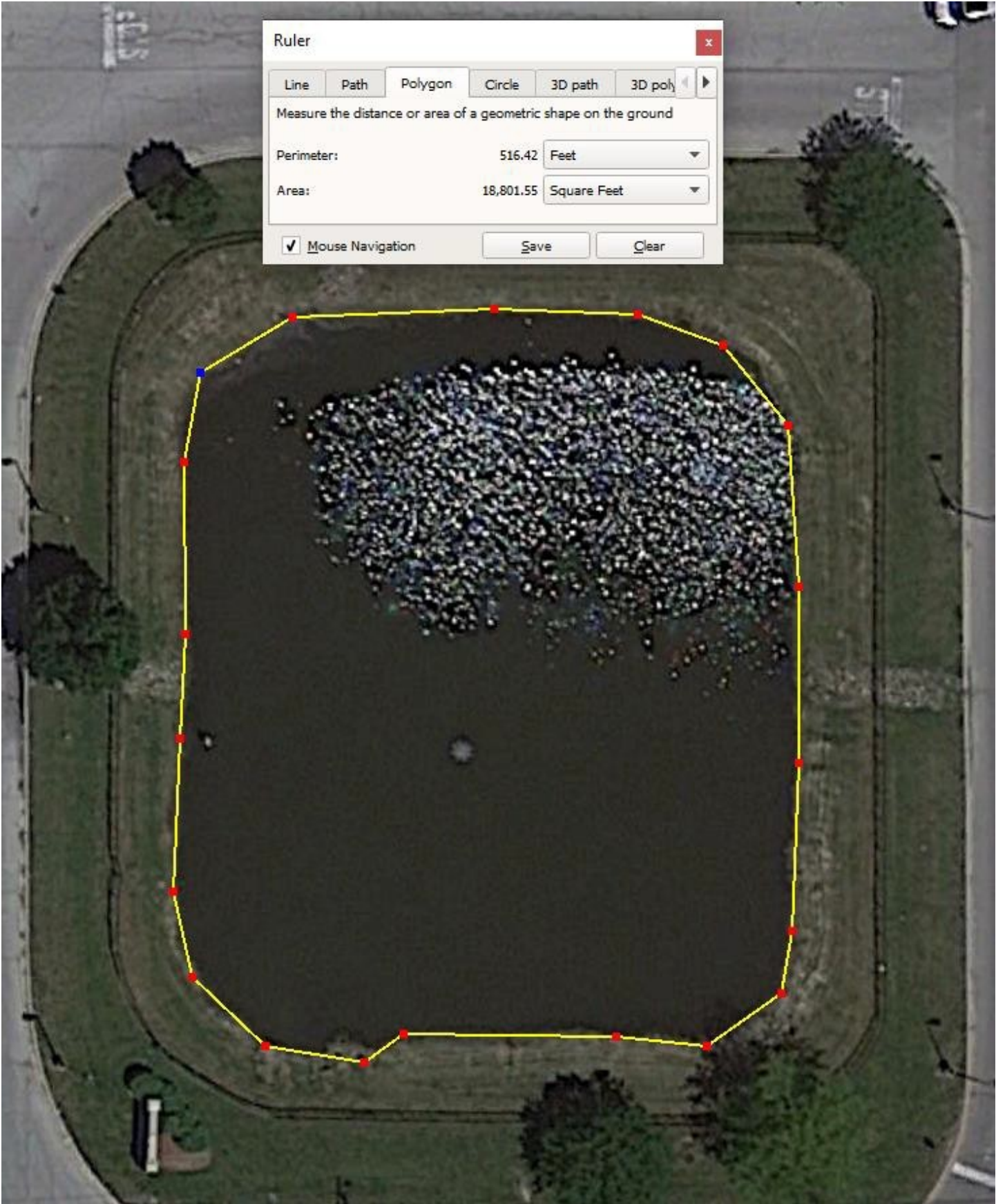
## Retention Basin A- Erosion Repair





## Retention Basin B- Erosion Repair









## Retention Basin B- Fountain Repair

